

MEKINA
INDUSTRIES

Mytholmroyd Footbridge Replacement

**BEAVER
BRIDGES**



EXPERIENCE THE MEKINA EDGE



INDUSTRY'S GREENEST
GRP FORMWORK



CONSISTENT, REPEATABLE
PERFORMANCE



COMPREHENSIVE TECHNICAL
ASSURANCE

Project Details:

LOCATION:	MYTHOLMROYD, HX7 5AX
YEAR:	2023
CLIENT:	MICHAEL WHITE, PRINCIPAL ENGINEER AT BEAVER BRIDGES
PRODUCT:	MEK-DEK STANDARD 40/150 GRP PERMANENT FORMWORK PANELS

PROJECT

New Footbridge Featuring Mek-Dek GRP Permanent Formwork

The new footbridge spanning the River Calder in Mytholmroyd, West Yorkshire, was installed by Beaver Bridges Ltd, under the management of Jackson Civil Engineering.

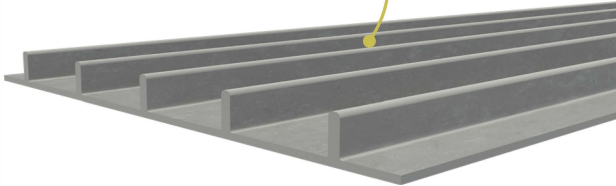
Serving pedestrians and cyclists, the footbridge replaces an outdated structure damaged by floods. After evaluation, Calderdale Council determined that building a new bridge was more cost-effective than repairing the old one.

Space limitations near a Grade II listed road bridge ruled out traditional formwork methods. Mekina's leave-in-place GRP formwork easily overcame these challenges.

Following beam installation, Beaver Bridges used Mekina Industries' Mek-Dek 40/150 GRP Permanent Formwork Panels for the concrete works, ensuring uniform curing and sufficient strength to support the new bridge's structural loads.

PRODUCT

MEK-DEK STANDARD PANEL



RAPID INSTALLATION

Eliminates the need for access beneath the structure.

EFFICIENT HANDLING

Lightweight panels minimises on-site risk during installation.

NO WASTAGE

Bespoke manufacture to suit project requirements boosts sustainability.

SOLUTION

Mek-Dek Offers Efficient Handling and Streamlined Construction.

Modular and lightweight, Mek-Dek panels are highly manoeuvrable, requiring less manpower and fewer resources for transport and installation.

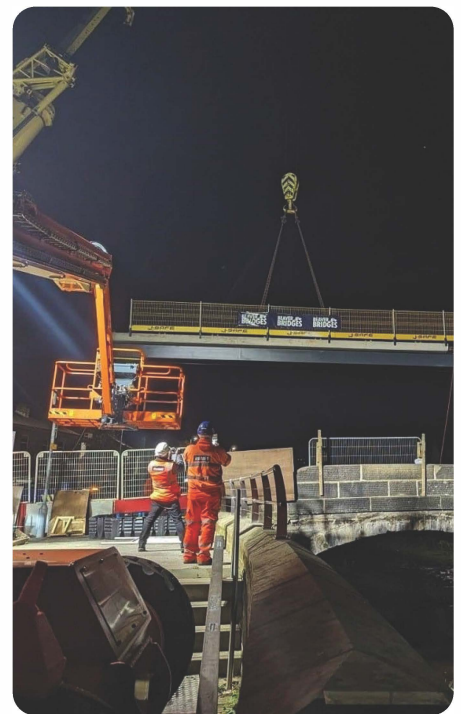
Because they remain in place, dismantling is unnecessary, saving valuable construction time. After determining the required specifications for the 320mm concrete deck, Mekina initiated a custom manufacturing process.

Made to order, the panels minimize waste, reduce resource use, and enhance the project's sustainability. Mekina expedited production

of Mytholmroyd Footbridge's 750mm-wide panels ahead of schedule, enabling Beaver Bridges to install sections onto pre-fabricated steelwork under factory conditions, optimizing efficiency.

Close collaboration with Beaver Bridges ensured constant communication, providing effective solutions to on-site challenges.

If you've got a project you'd like to talk to use about, don't hesitate to get in touch by calling us on 01377 255055 or emailing your project details to us at sales@mekinaindustries.com.



“

Michael White, Principal Engineer at Beaver Bridges said:

“Mekina Industries were really great to work with on this job. They were committed to helping us deliver the best solution and offered quick responses to any technical queries we had”.

”

“

Mark Johnson, Director of Operations at Mekina Industries said:

“It's great to have played our part in ensuring that this crossing is fit for the future. In this case, GRP permanent formwork was the perfect choice, offering design flexibility, durability, and sustainable solution for this modernised structure.”

”