

MEKINA
INDUSTRIES

Heritage Railway Bridge, Barbados

REIDsteel

EXPERIENCE THE MEKINA EDGE



INDUSTRY'S GREENEST
GRP FORMWORK



CONSISTENT, REPEATABLE
PERFORMANCE



COMPREHENSIVE TECHNICAL
ASSURANCE

Project Details:

LOCATION:	SAINT PETER, BARBADOS
YEAR:	2024
CLIENT:	REIDSTEEL
PRODUCT:	MEK-DEK BESPOKE GRP FORMWORK PANELS

PROJECT

Providing Mek-Dek GRP Permanent Formwork for St Nicholas Abbey Heritage Railway Bridge, Barbados

St. Nicholas Abbey Heritage Railway (SNAHR) is a 1.5 kilometre long heritage narrow gauge railway in the parish of Saint Peter on the Eastern Caribbean island of Barbados.

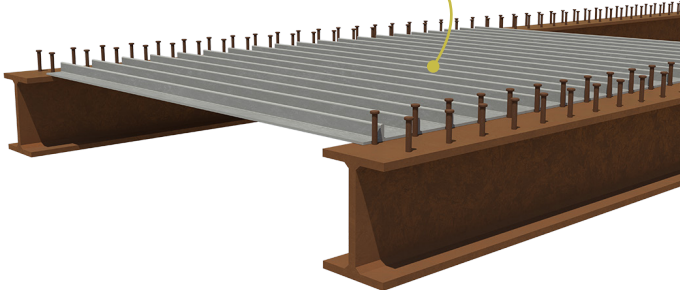
Mekina's GRP Mek-Dek standard panels were used between intermediate beams, with Mek-Dek panels also used vertically to cast the deck edge.

While steel was considered for the project, the risk of corrosion and the required level of maintenance encouraged REIDsteel to look into alternative options.

Durability and safety during installation played a key role in the selection of Mek-Dek panels, as well as its favourable price and design over other products on the market.

PRODUCT

MEK-DEK STANDARD GRP PANEL



RAPID INSTALLATION

Eliminates the need for access beneath the structure.

EFFICIENT HANDLING

Lightweight panels minimises on-site risk during installation while maintaining excellent product durability.

NO WASTAGE

Bespoke manufacture to suit project requirements boosts sustainability.

SOLUTION

With over 50 years of experience in the GRP industry, we bring extensive expertise to projects of this nature.

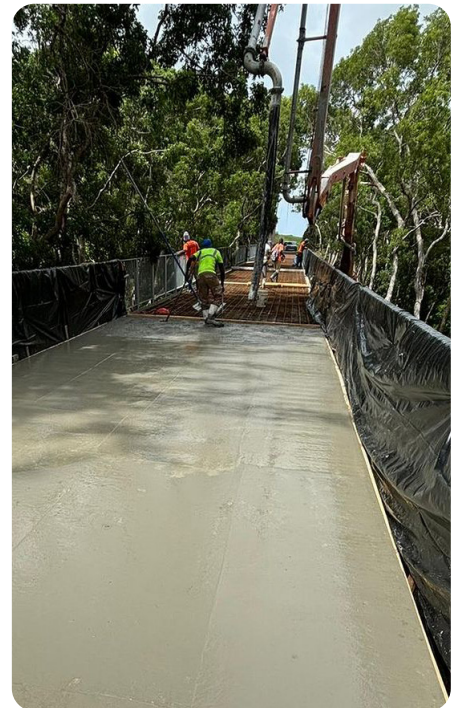
Mek-Dek Panels are modular and lightweight, making them highly manoeuvrable, therefore requiring less manpower and fewer resources for transportation and installation. Because they remain in place permanently, there's also no need for dismantling or removal, saving valuable construction time.

After determining the required panel specifications, Mekina began its custom manufacturing process. 480 panels were designed and manufactured, which included 22 bespoke panel variations to

suit the complexity of the supporting structure.

Mek-Dek panels were designed to sit vertically and included 12mm diameter holes within ribs at specific locations for the installer to use as a restraint when fixing the panels for the deck edge pour.

If you've got a project you'd like to talk to use about, don't hesitate to get in touch by calling us on 01377 255055 or emailing your project details to us at sales@mekinaindustries.com.



“

A spokesperson at REIDsteel, said:

“As a popular tourist attraction, it was important that we delivered the project in a timely fashion and to a high standard, whilst ensuring long-term durability. The lightweight, modular nature of Mekina's GRP panels allowed us to achieve this by minimising time and waste.

At REIDsteel we have a worldwide reputation for excellence and as such are required to uphold our position as a leading company in industrial buildings and structures, and as such we're very mindful about the companies we partner and the products we use.

Working with Mekina was a pleasure and we're really pleased with the outcome of this project - installation ran smoothly and the finished bridge looks exceptional.”

”