

HS2 A421 London Road Overbridge



EXPERIENCE THE MEKINA EDGE



INDUSTRY'S GREENEST
GRP FORMWORK



CONSISTENT, REPEATABLE
PERFORMANCE



COMPREHENSIVE TECHNICAL
ASSURANCE

Project Details:

LOCATION:	BUCKINGHAMSHIRE
YEAR:	2024
CLIENT:	EKFB
PRODUCT:	MEK-DEK HAUNCHED AND STANDARD GRP FORMWORK PANELS

PROJECT

New Overbridge for the A421 Enabled by Mek-Dek GRP Permanent Formwork Panels

The construction of new overbridges is vital to HS2's goal of creating a modern, efficient, and safe high-speed railway integrated with existing infrastructure.

EKFB, a joint venture of Eiffage, Kier, Ferrovial Construction, and BAM Nuttall, managed the installation of this overbridge in Buckinghamshire.

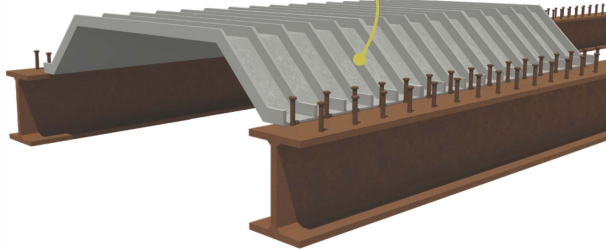
Located on a busy A road, the bridge enables vehicles to cross the HS2

railway, improving access to both sides. Key challenges included managing complexity and ensuring safety while spanning rail tracks without interference.

Mekina Industries supplied bespoke GRP Mek-Dek Haunched Panels to meet the technical demands, ensuring the haunch continued seamlessly from the underside and implementing safety measures to prevent accidental dislodgement.

PRODUCT

MEK-DEK HAUNCHED PANEL



RAPID INSTALLATION

Eliminates the need for access beneath the structure.

EFFICIENT HANDLING

Lightweight panels minimises on-site risk during installation.

NO WASTAGE

Bespoke manufacture to suit project requirements boosts sustainability.

SOLUTION

With Over 50 Years of Experience in the GRP Industry, We Bring Extensive Expertise to Projects of This Nature.

Modular & lightweight, Mek-Dek Panels are highly manoeuvrable, requiring less manpower & fewer resources for transport & installation.

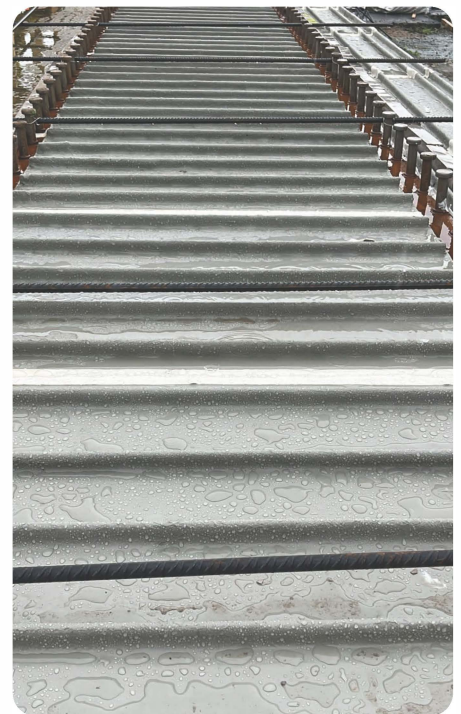
They provide a safe working platform, installed from above, streamlining construction and enhancing on-site safety. As they remain in place, dismantling is unnecessary, saving valuable construction time.

After determining the specifications to support the concrete deck, Mekina initiated a custom manufacturing process. Tailored for the A421

overbridge, our panels minimised waste, reduced resource usage & boosted sustainability credentials.

Throughout the project, we collaborated closely with the EKFB design team, ensuring clear communication to address challenges & meet requirements.

If you've got a project you'd like to talk to use about, don't hesitate to get in touch by calling us on 01377 255055 or emailing your project details to us at sales@mekinaindustries.com.



“

Commenting on the project a customer spokesperson, said:

“We approached Mekina for this complex structure based on their reputation. Mekina successfully passed our rigorous onboarding process and delivered an excellent product on schedule. We are now collaborating with Mekina on several projects, leveraging their quality and expertise.”

”